

Estimated duration of effectiveness

Spray periodically, depending on the frequency of friction.

- Soft materials such as urethane and plastic, as well as high friction areas such as doorknobs and buttons. 1 ~ 3 months
- Areas of low friction such as walls and fabrics which do not need to be washed. 6 ~ 12 months

- Leather goods, glassware and mirrors may change in texture.
- Do not use on metals that are sensitive to discoloration, such as silver, copper and brass.
- Do not use paper products as they may tear or leave water stains.
- Do not use on precision equipment or art works that do not tolerate moisture.
- When sprayed on fabrics with water-based dyes, moisture may cause their color to bleed.
- Be sure to try and test it in an unseen area.



◀ Use this sticker to show protection.

As a proof of application, we are enclosing a sticker "Antivirus and antibacterial coating applied" for customers who have purchased the product. If you like, please display it on the coated area.

【Cautions for use】

Avoid use on anything which are design-conscious, such as glass, acrylic, genuine leather, artificial leather, etc., as they may crystallize white after drying or become matte on glossy base materials. In case it is applied accidentally, wipe up immediately with a wet towel. ●Do not use on water-repellent fabrics. ●Wear a dust-proof mask during application. ●Do not spray on food, drink, plants and animals. ●Do not spray on precision equipment.

【Cautions for handling】

Do not use for any other purpose than its intended use. ●There is no danger to human body in normal use, but in case of accidental ingestion of spray, seek medical advice. ●In case of eye contact, flush with water immediately and get medical advice. ●Store in a cool place avoiding direct sunlight and out of the reach of children. ●Do not expose spray cans to temperatures of 40 °C or higher as they are pressurized with nitrogen gas. Do not expose to fire. Use it up before throwing it away. ●Do not use spray cans tilted more than 45 degrees. Do not shake.

Contact information

Nasc Nano Technology Co., Ltd.

Email medi@medi-coat.com

4F Shintoyo Akasaka Bldg,4-9-25 Akasaka, Minato-ku, Tokyo

Nasc Nano Spray Can How to use



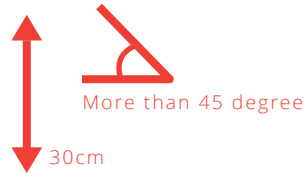
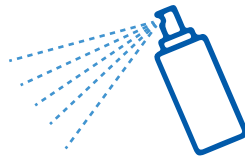
Hot to apply

① Preparation before coating



Remove stains and oil substances by wiping with wet cloth
※Use mild detergent when stains persist

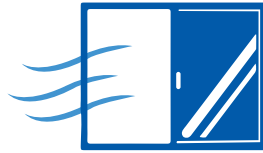
② Spray coating



More than 45 degree

30cm

③ Drying



30 ~ 60 mins
※Cleaning is after 24 hrs

① Preparation for coating

Clean the surface you wish to coat. Coating does not adhere when stains or oil substances are on a surface.

Clean the surface with wet cloth and let it dry.

If stains and oil substances persist, use mild detergent to remove them and use wet cloth to wipe and clean. Be careful to remove any detergent residue.

② How to spray coating

Spray with a distance of about 30 cm from the surface in a well ventilated area and in the same direction as any wind.

Use spray can at an angle of no more than 45 degrees.

Do not shake spray can when using. Shaking will cause nitrogen gas to vent.

For fabric application, please spray small unseen area first and let it dry to check the finish.

The proper amount of spray to use would be just enough to lightly dampen the surface. Spraying excessive amounts on hard surfaces may cause drips and marks to form. If you wish to spray large amount coating, repeat spraying with regular amount several times. Avoid overspraying. If more than one coat is wanted, repeat. If coating is applied and drips, wipe it off immediately with a clean cloth and spray again lightly.

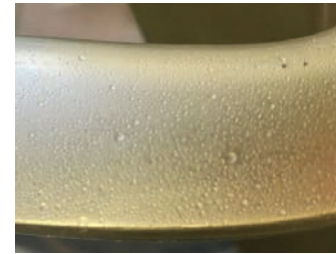


③ Dry

After spraying, drying thoroughly without touching it is the most important factor in applying the coating. Normally it takes about 30 minutes to 1 hour for the surface to dry. It is fine to touch once it is dry.

How to clean up water droplets left on the surface

Normally, traces of the spray are unnoticeable, but in rare cases, such as on very smooth stainless steel surfaces, water spots may be noticed.



If a large water drop forms, dry the surface completely without touching it. Then wipe the applied area with a clean cloth to check water droplets are still present. Spray again lightly and spread the coating over the surface with a clean, dry cloth (e.g., microfiber). When it dries, the water droplet marks on the surface disappear and the finish becomes

smooth. After drying completely, if a large water droplet mark remains and if it is removed by wiping with a cloth, the material you are trying to coat has difficulty with coating to adhere to. In many cases, materials with a very smooth surface and strong water-repellent qualities are particularly difficult to adhere to. If so, spray more frequently than usual.

e.g., chrome plating with a mirror finish, water-repellent plastic, porcelain with smooth surface etc.

④ Maintenance after coating

To maximize durability of coating, clean the surface with a clean cloth by wiping it with a dry or wet cloth. Use of a mild detergent is recommended, if the area is especially dirty. It is also fine to wipe the coated surface with rubbing alcohol.

Avoid the following cleaning procedures. If you do, please spray again.

- Avoid anything that scrapes surface, steel wool and abrasive cleaners.
- Do not use strong alkaline chemicals or detergents.
- Do not use undiluted bleach or mildew detergent.

How to use video

Click here for a very simple video explanation.

<https://youtu.be/F8rNX4TjM1s>

